

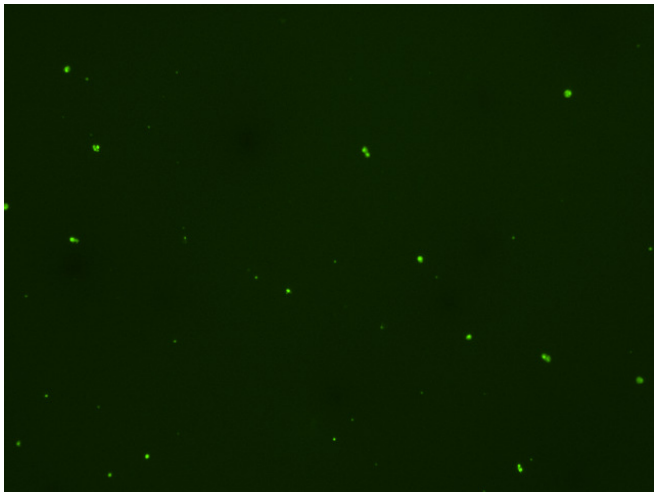
Assay: Stem cells

Sample ID: J-CI5_CS10.2

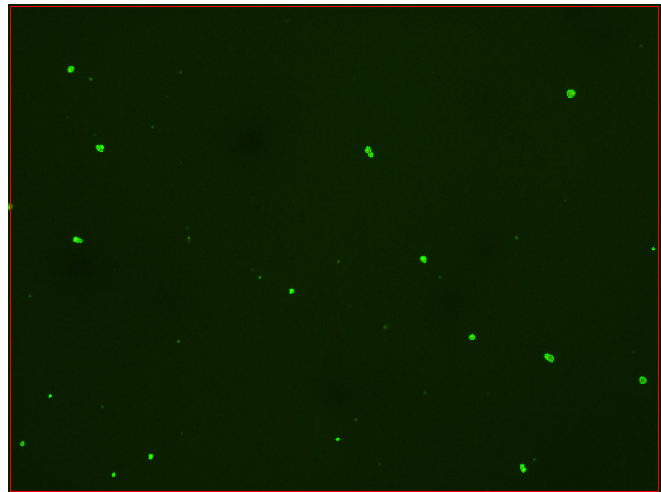
Dilution Factor: 2.00

Count =====	Concentration =====	Mean Diameter =====
Total: 91 cells	3.17×10^5 cells/mL	9.1 microns
Live: 70 cells	2.44×10^5 cells/mL	9.4 microns
Dead: 21 cells	7.30×10^4 cells/mL	8.2 microns

Viability: 77.0%



Original Images



Counted Images

