

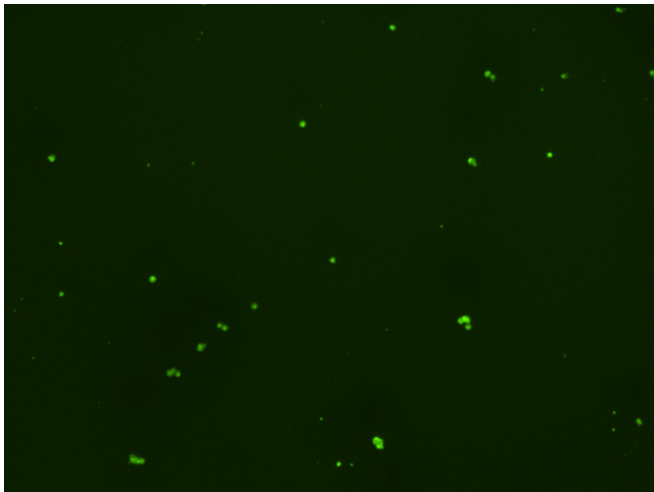
## Assay: Stem cells

Sample ID: J-CI5\_CS10.3

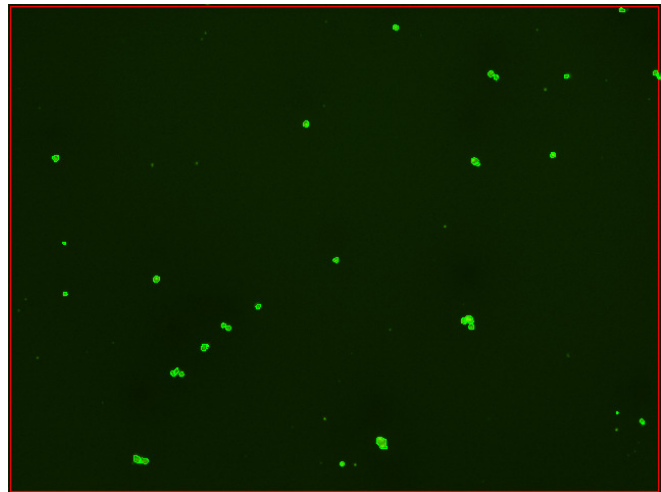
Dilution Factor: 2.00

Count	Concentration	Mean Diameter
=====	=====	=====
Total: 111 cells	$3.88 \times 10^5$ cells/mL	10.1 microns
Live: 99 cells	$3.46 \times 10^5$ cells/mL	10.3 microns
Dead: 12 cells	$4.17 \times 10^4$ cells/mL	8.6 microns

Viability: 89.2%



Original Images



Counted Images

