

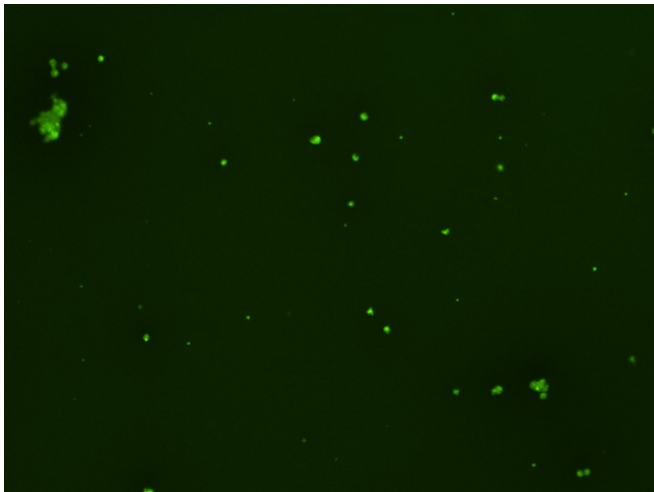
## Assay: Stem cells

Sample ID: J-CI5\_CS5.1

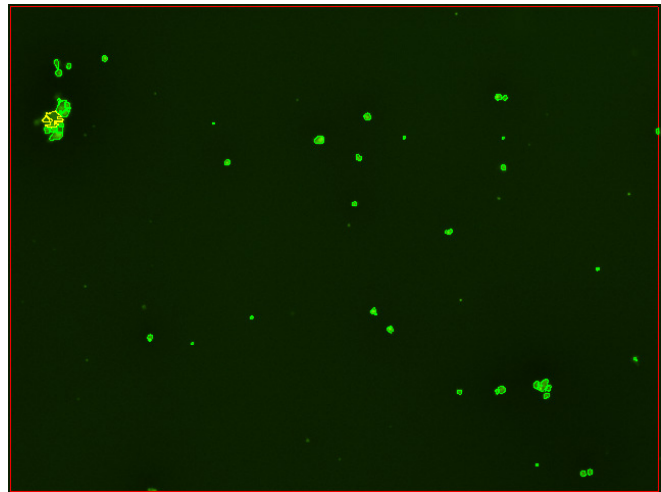
Dilution Factor: 2.00

Count	Concentration	Mean Diameter
===== Total: 123 cells Live: 105 cells Dead: 18 cells	===== 4.32x10 <sup>5</sup> cells/mL 3.69x10 <sup>5</sup> cells/mL 6.27x10 <sup>4</sup> cells/mL	===== 11.5 microns 11.9 microns 9.0 microns

Viability: 85.5%



Original Images



Counted Images

