

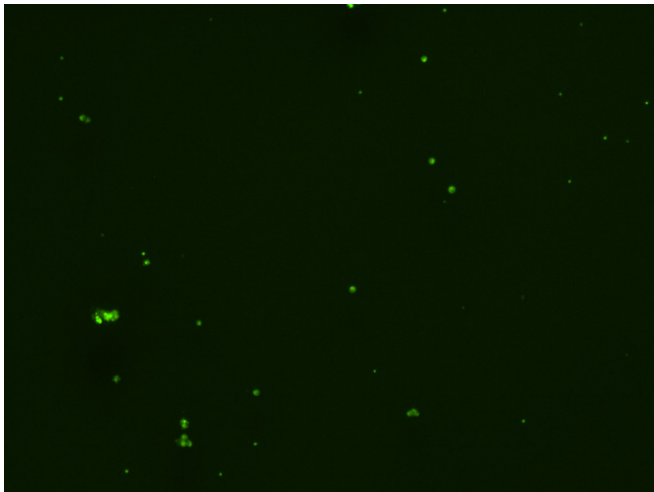
Assay: Stem cells

Sample ID: J-CI5_CS5.2

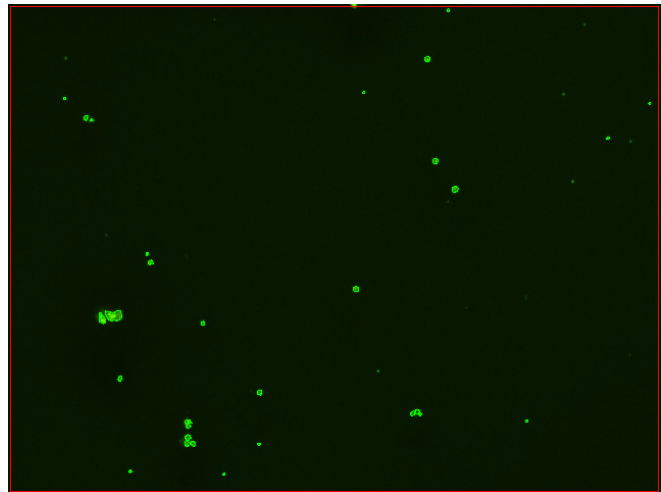
Dilution Factor: 2.00

Count	Concentration	Mean Diameter
=====	=====	=====
Total: 147 cells	5.13×10^5 cells/mL	9.6 microns
Live: 135 cells	4.71×10^5 cells/mL	9.5 microns
Dead: 12 cells	4.20×10^4 cells/mL	10.7 microns

Viability: 91.8%



Original Images



Counted Images

