

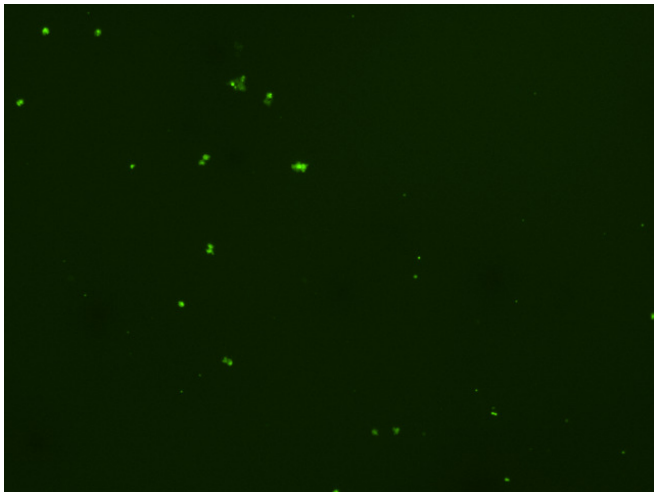
Assay: Stem cells

Sample ID: J-CI5_CS5.3

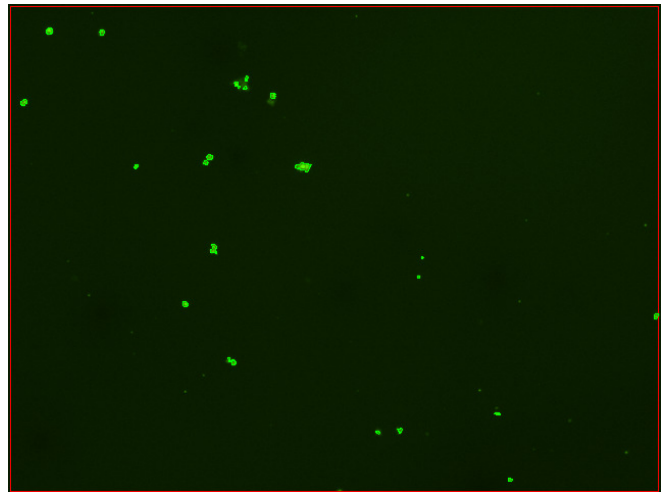
Dilution Factor: 2.00

Count	Concentration	Mean Diameter
=====	=====	=====
Total: 120 cells	4.19×10^5 cells/mL	9.9 microns
Live: 96 cells	3.36×10^5 cells/mL	10.3 microns
Dead: 24 cells	8.34×10^4 cells/mL	8.3 microns

Viability: 80.1%



Original Images



Counted Images

