

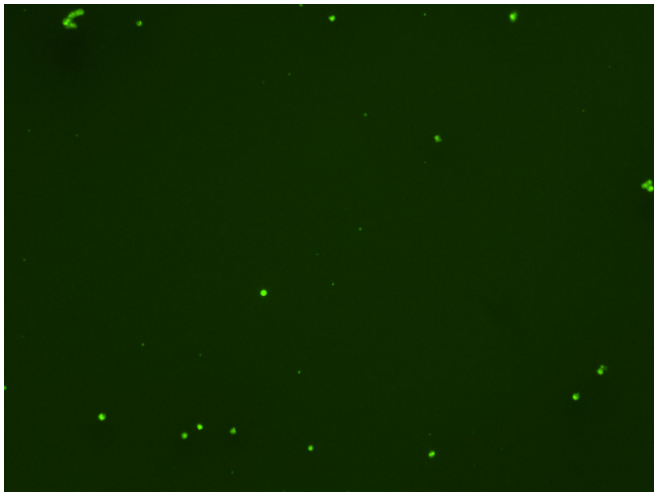
Assay: Stem cells

Sample ID: J-CI5_D.1

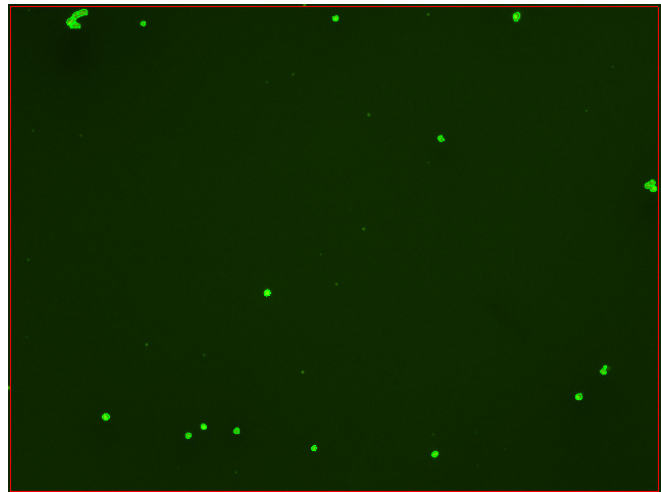
Dilution Factor: 2.00

Count	Concentration	Mean Diameter
=====	=====	=====
Total: 89 cells	3.12×10^5 cells/mL	11.5 microns
Live: 78 cells	2.74×10^5 cells/mL	11.6 microns
Dead: 11 cells	3.85×10^4 cells/mL	10.2 microns

Viability: 87.7%



Original Images



Counted Images

