

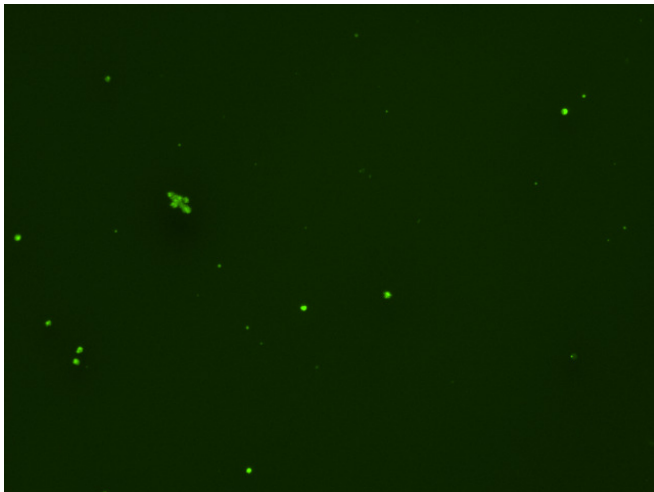
Assay: Stem cells

Sample ID: J-CI5_D.2

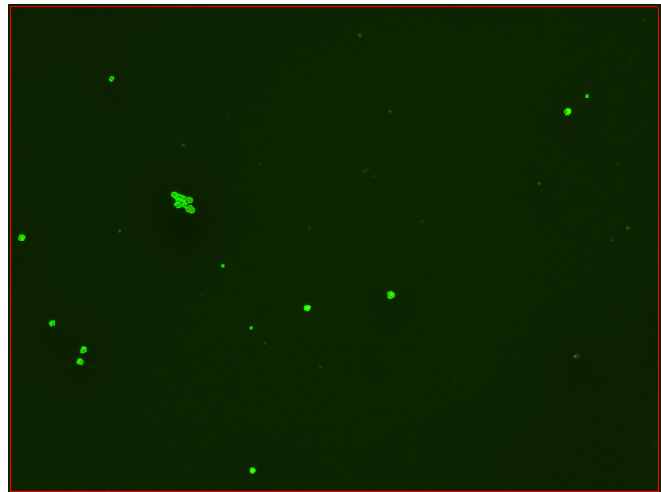
Dilution Factor: 2.00

Count	Concentration	Mean Diameter
===== Total: 92 cells Live: 81 cells Dead: 11 cells	===== 3.23x10 ⁵ cells/mL 2.85x10 ⁵ cells/mL 3.83x10 ⁴ cells/mL	===== 11.6 microns 12.0 microns 8.7 microns

Viability: 88.2%



Original Images



Counted Images

