

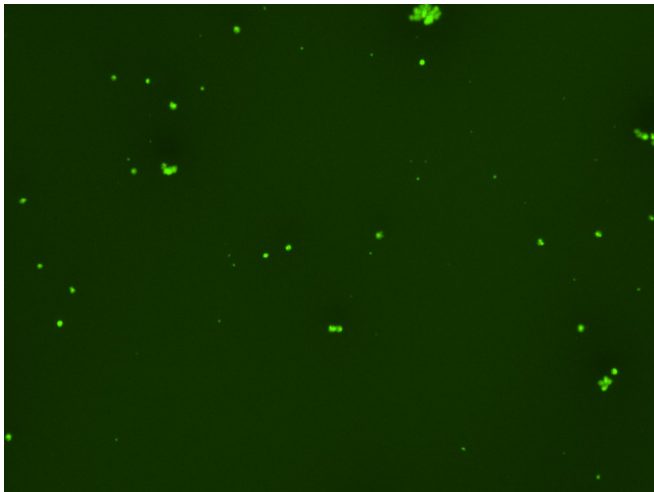
Assay: Stem cells

Sample ID: J-CI5_D.3

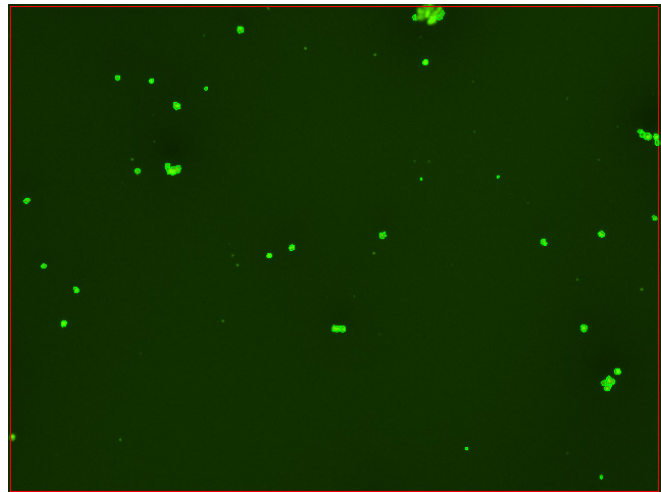
Dilution Factor: 2.00

| Count | Concentration | Mean Diameter |
|------------------|-----------------------------|---------------|
| ===== | ===== | ===== |
| Total: 151 cells | 5.30×10^5 cells/mL | 11.3 microns |
| Live: 133 cells | 4.67×10^5 cells/mL | 11.7 microns |
| Dead: 18 cells | 6.26×10^4 cells/mL | 8.4 microns |

Viability: 88.2%



Original Images



Counted Images

