

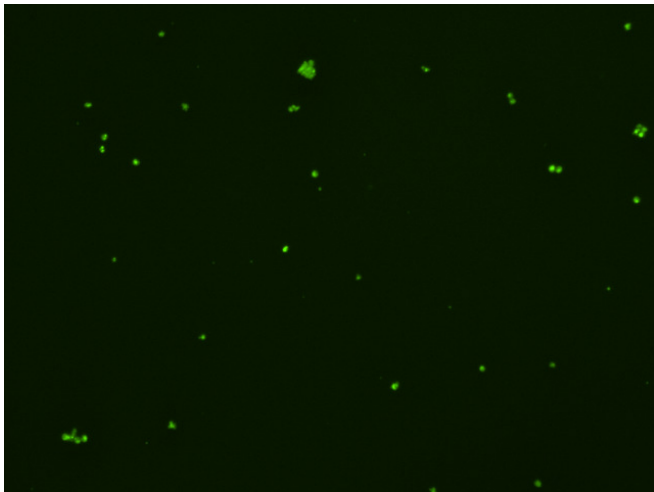
## Assay: Stem cells

Sample ID: J-CI5\_E.2-2

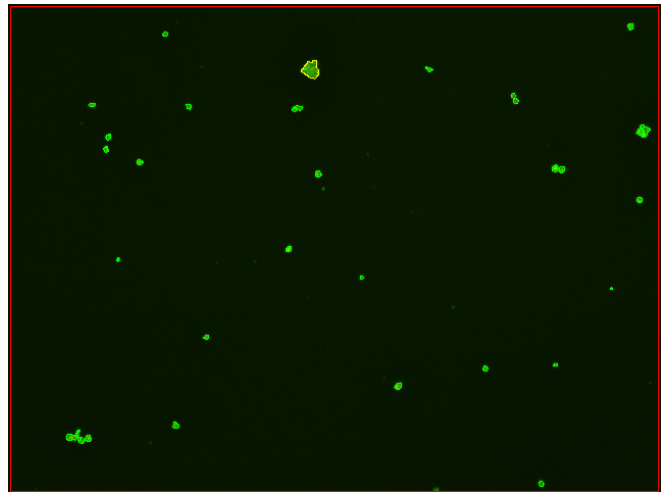
Dilution Factor: 2.00

Count	Concentration	Mean Diameter
=====	=====	=====
Total: 148 cells	$5.18 \times 10^5$ cells/mL	10.5 microns
Live: 124 cells	$4.34 \times 10^5$ cells/mL	10.7 microns
Dead: 24 cells	$8.36 \times 10^4$ cells/mL	9.2 microns

Viability: 83.9%



Original Images



Counted Images

