

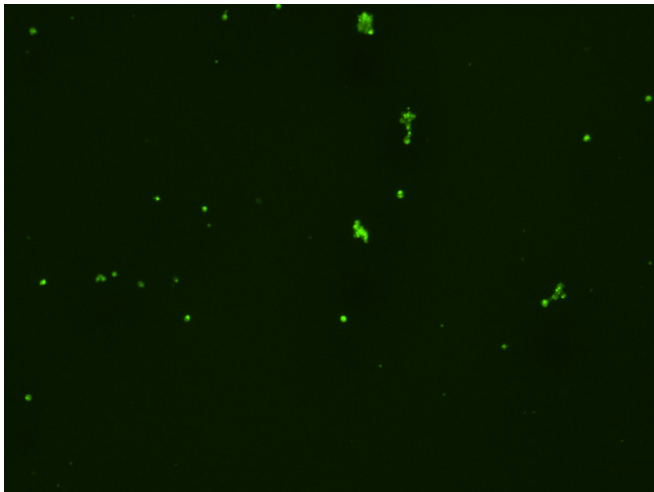
Assay: Stem cells

Sample ID: J-CI5_E.3

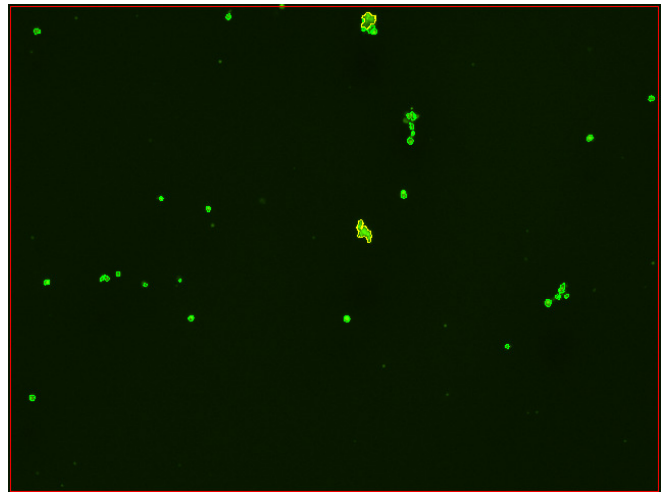
Dilution Factor: 2.00

Count	Concentration	Mean Diameter
=====	=====	=====
Total: 127 cells	4.45×10^5 cells/mL	10.9 microns
Live: 108 cells	3.79×10^5 cells/mL	11.1 microns
Dead: 19 cells	6.63×10^4 cells/mL	9.5 microns

Viability: 85.1%



Original Images



Counted Images

