

A) nGTPase EF hand EF hand cGTPase Transmembrane domain



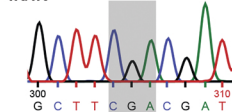
Q8IXI2 | MIRO1\_HUMAN 257 LFIQRGRHETTWTVLRFQYDDDLDTPEYL 287  
 Q8BG51 | MIRO1\_MOUSE 270 LFIQRGRHETTWTVLRFQYDDDLDTPEYL 300



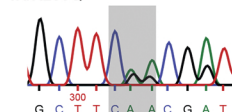
wild-type sequence 5'... GAG ACT ACT TGG ACT GTG CTT CGA CGA TTT GGT TAT GAC GAT GAC ...3'

Miro1 R285Q ssODN 5'... GAG ACT ACT TGG ACT GTG CTT CAG CGG TTT GGT TAT GAC GAT GAC ...3'

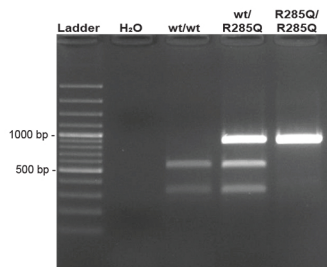
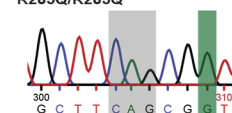
wt/wt



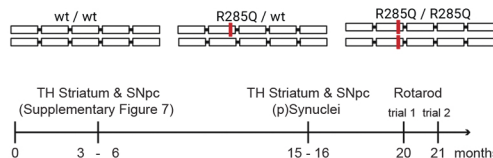
wt/R285Q



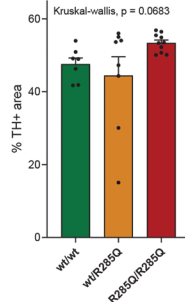
R285Q/R285Q



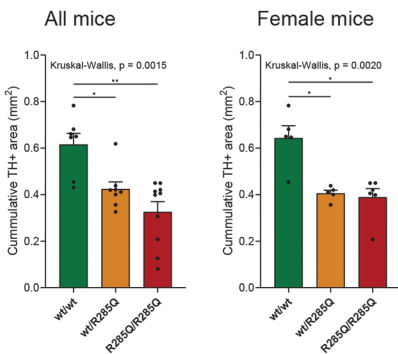
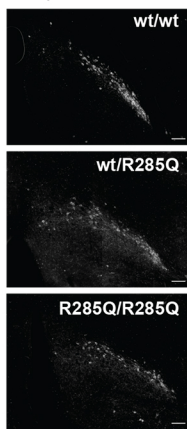
## B) Conditions & timeline



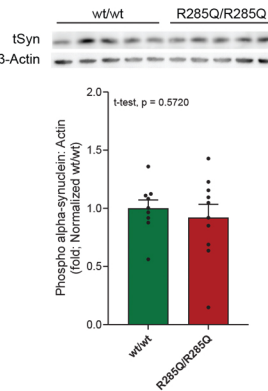
## C) Striatal TH



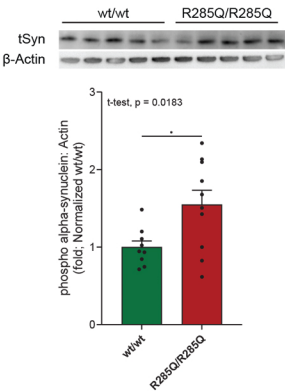
## D) SNpc TH



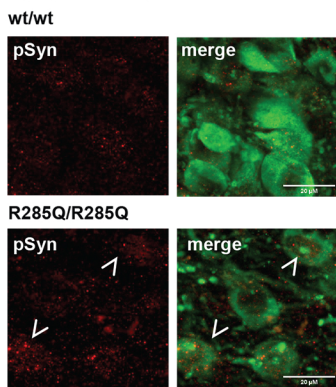
## E) Striatal total α-synuclein Female mice



## F) Striatal phospho α-synuclein Female mice

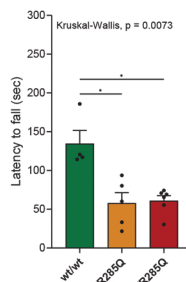


## G) SNpc pS129 α-synuclein - Female mice



phospho-Synuclein, TH

## H) Rotarod Trial 1 Female mice



## I) Rotarod Trial 2 Female mice

