

Supplementary Western blotting data

Parkinson's disease mutant Miro1 causes mitochondrial dysfunction and dopaminergic neuron loss

Axel Chemla¹, Giuseppe Arena¹, Ginevra Sacripanti¹, Kyriaki Barmpla¹, Alise Zagare¹, Pierre Garcia^{1,2}, Vyron Gorgogietas¹, Paul Antony¹, Jochen Ohnmacht³, Alexandre Baron¹, Jaqueline Jung⁴, Frida Lind-Holm Mogensen^{3,5}, Alessandro Michelucci³, Anne-Marie Marzesco^{1,§}, Manuel Buttini^{1,2}, Thorsten Schmidt⁴, Anne Grünewald^{1,6}, Jens C. Schwamborn^{1,*}, Rejko Krüger^{1,3,7,*}, Cláudia Saraiva^{1,*}

Affiliations:

¹Luxembourg Centre for Systems Biomedicine (LCSB), University of Luxembourg, L-4362 Esch-sur-Alzette, Luxembourg

²Luxembourg Center of Neuropathology (LCNP), Laboratoire National de Santé, L-3555, Dudelange, Luxembourg

³ Luxembourg Institute of Health (LIH), L-1445 Luxembourg, Luxembourg

⁴Institute of Medical Genetics and Applied Genomics, University of Tübingen, 72076 Tübingen, Germany

⁵Faculty of Science, Technology and Medicine, University of Luxembourg, L-4365 Esch-sur-Alzette, Luxembourg

⁶Institute of Neurogenetics, University of Lübeck, 160 Lübeck, Germany

⁷Centre Hospitalier de Luxembourg, L-1210, Luxembourg, Luxembourg

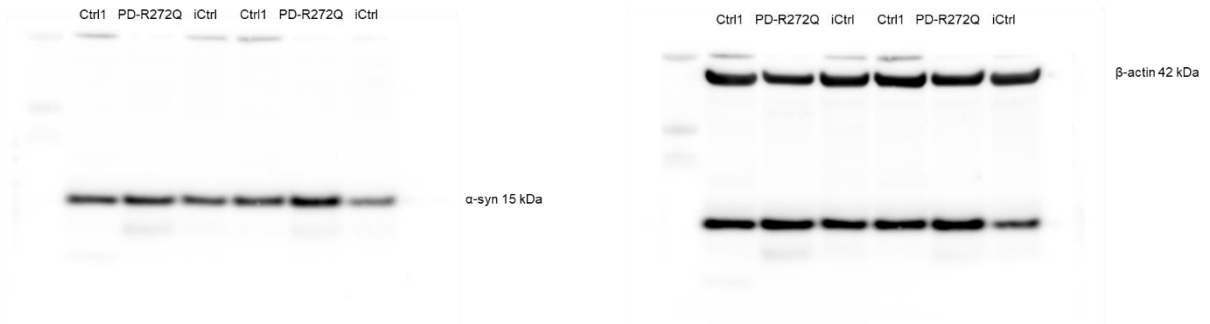
§ Current address: University Medical Center Hamburg-Eppendorf, Center for Molecular Neurobiology Hamburg, 20246 Hamburg, Germany

* Senior authors

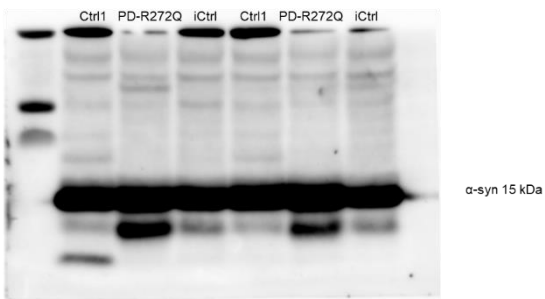
Correspondence to: jens.schwamborn@uni.lu (JCS), rejko.krueger@lih.lu (RK) and claudia.saraiva@uni.lu (CS)

Supplementary Western blotting data

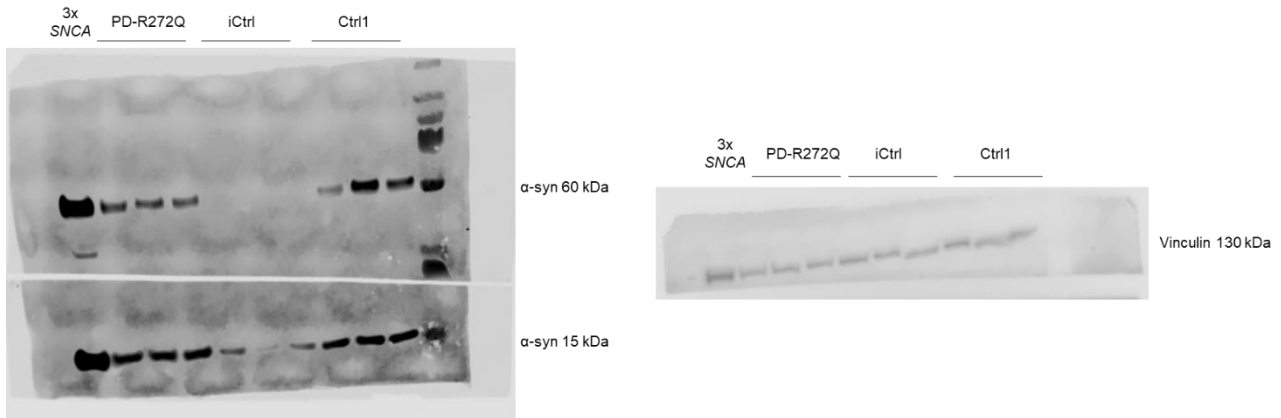
Normal exposure



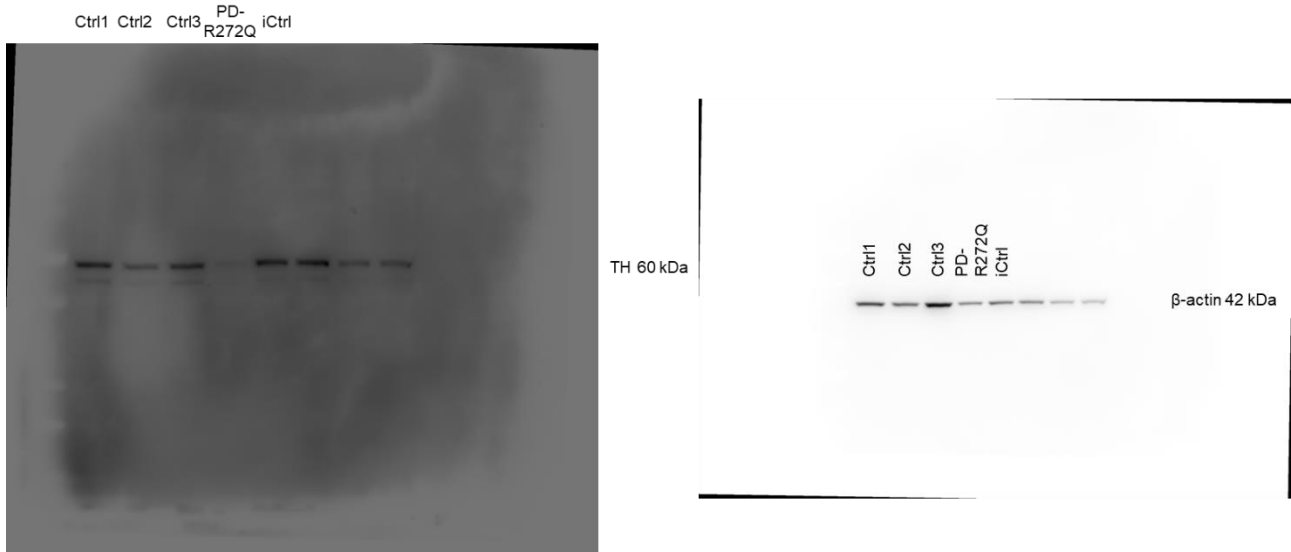
High exposure



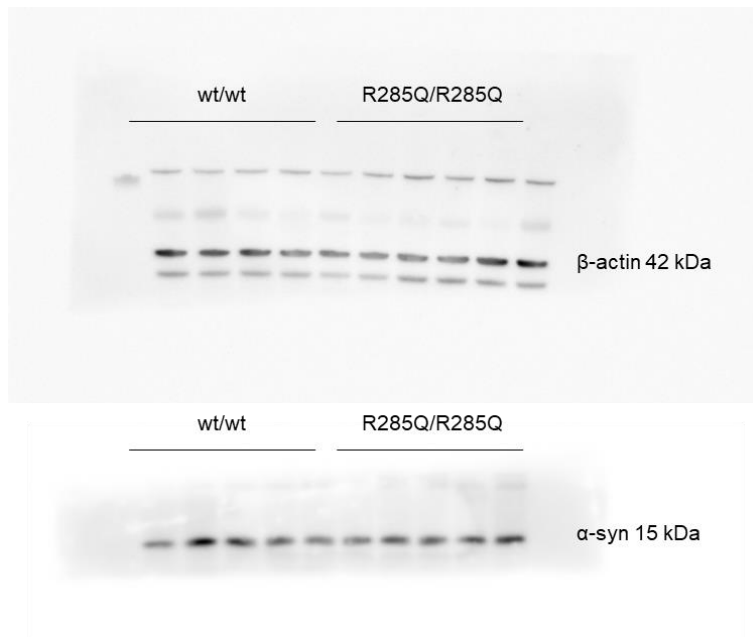
WB1. Original full length membrane referent to the data displayed at Main Figure 4B. Left: α -synuclein normal (top) and high (bottom) exposures. Right: full membrane showing β -actin.



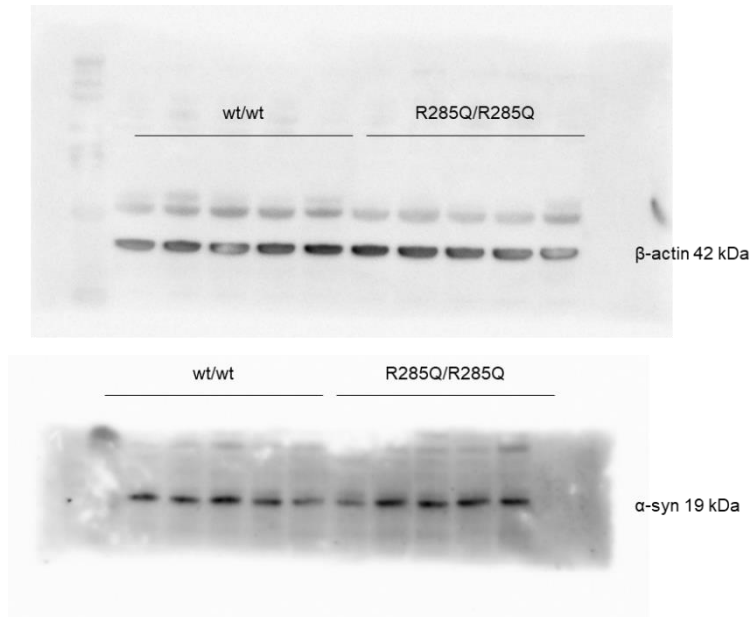
WB2. Original membrane shown at Main Figure 4F, blotted for α -synuclein (left) and Vinculin (right).



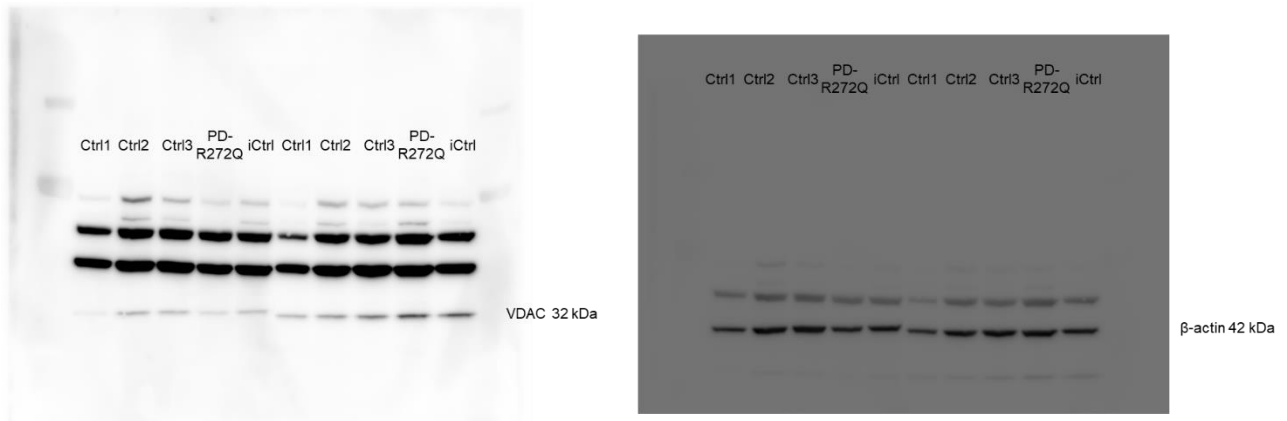
WB3. Original membrane shown at Main Figure 5A, blotted for tyrosine hydroxylase (TH, left) and β -actin (right).



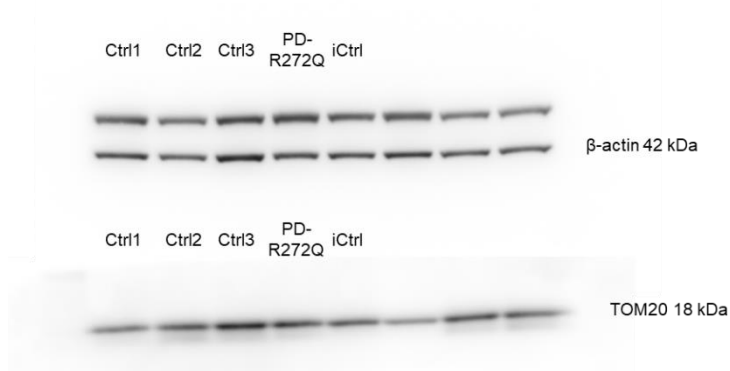
WB4. Original membrane shown at Main Figure 6E, blotted for β -actin (top) and α -synuclein (α -syn, bottom).



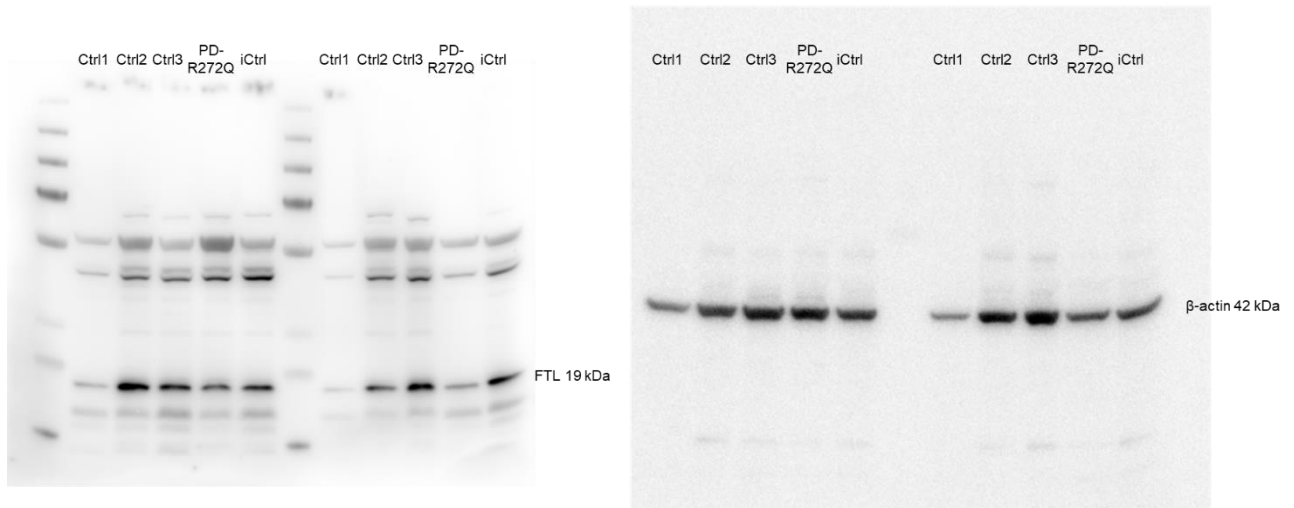
WB5. Original membrane shown at Main Figure 6F, blotted for β-actin (top) and phosphorylated S129 α-synuclein (α-syn, bottom).



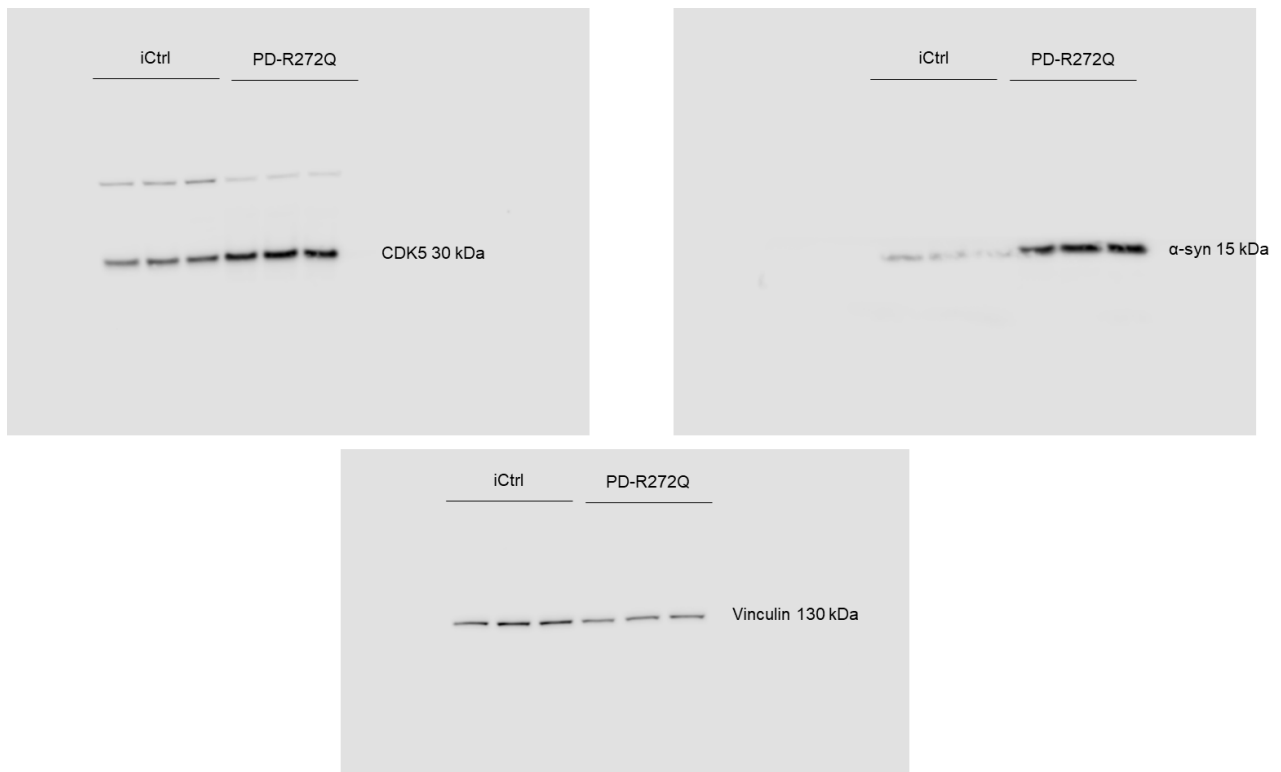
WB6. Original membrane shown at Supplementary Figure 4B, blotted for VDAC (left) and β-actin (right).



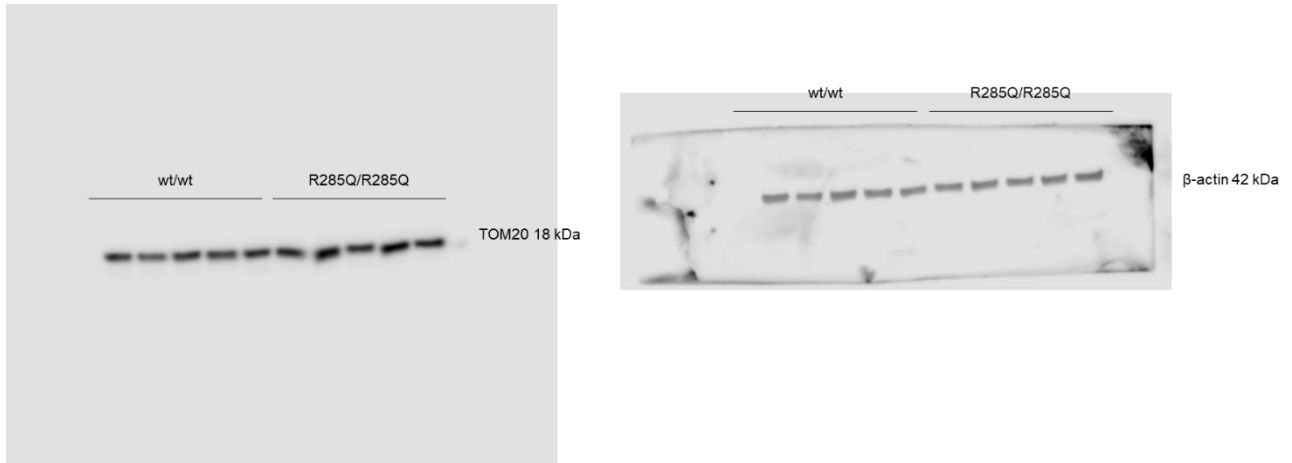
WB7. Original membrane shown at Supplementary Figure 4C, blotted for TOM20 (bottom) and β-actin (top).



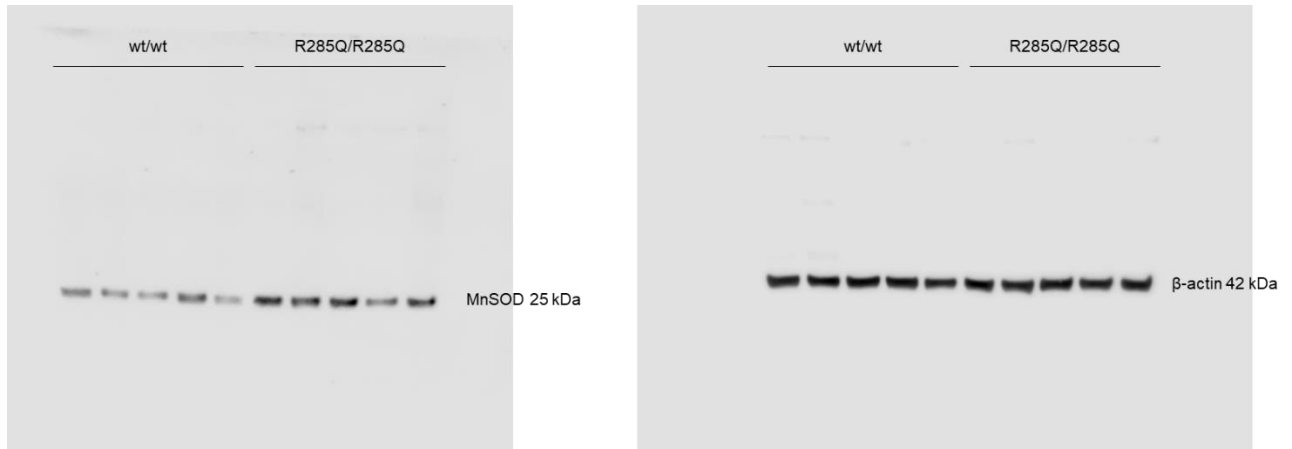
WB8. Original membrane shown at Supplementary Figure 4D, blotted for FTL (left) and β -actin (right).



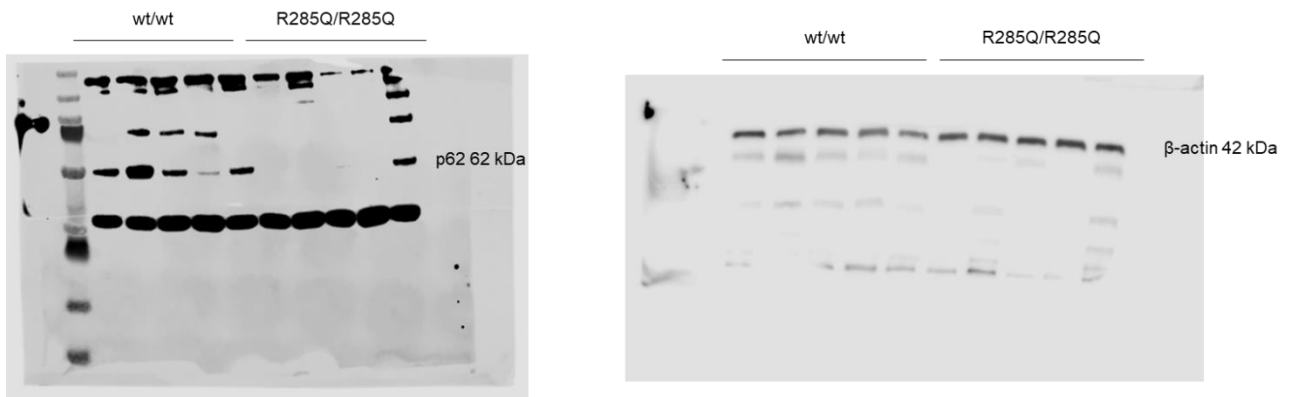
WB9. Original membrane shown at Supplementary Figure 6E, blotted for CDK5 (top left), α -synuclein (top right) and vinculin (bottom).



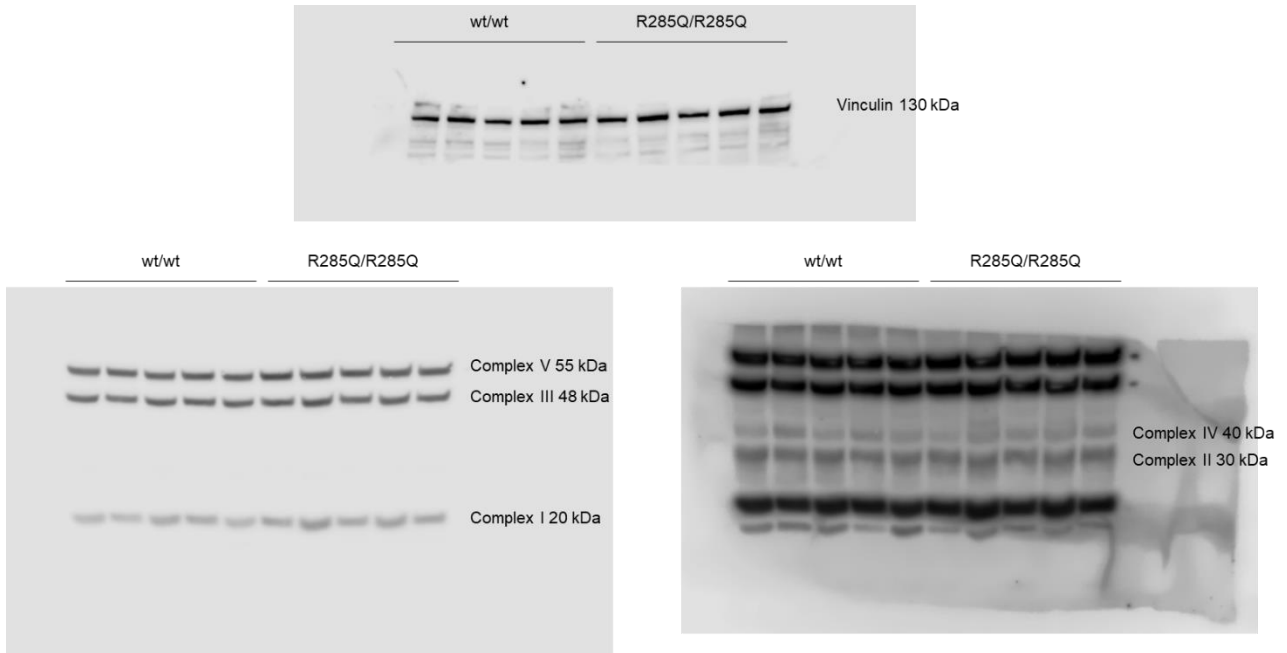
WB10. Original membrane shown at Supplementary Figure 9C, blotted for TOM20 (left) and β -actin (right).



WB11. Original membrane shown at Supplementary Figure 9D, blotted for MnSOD (left) and β -actin (right).



WB12. Original membrane shown at Supplementary Figure 9E, blotted for p62 (left) and β -actin (right).



WB13. Original membrane shown at Supplementary Figure 9F, blotted for Vinculin (top) and mitochondrial complex V, III, and I (bottom left) as well as mitochondrial complex IV and II (bottom right).